



JRC Technical Report

Mismatch unemployment in Austria The role of regional labour markets for skills

JRC Working Papers Series on
Labour, Education and Technology
2021/08

René Böheim and Michael Christl

LABOUR

EDUCATION

TECHNOLOGY

Joint
Research
Centre

This Working Paper is part of a Working paper series on Labour, Education and Technology by the Joint Research Centre (JRC). The JRC is the European Commission's science and knowledge service. It aims to provide evidence-based scientific support to the European policymaking process. The scientific output expressed does not imply a policy position of the European Commission. Neither the European Commission nor any person acting on behalf of the Commission is responsible for the use that might be made of this publication.

Contact Information

Name: Michael Christl

Address: European Commission, Joint Research Centre (Seville, Spain)

Email: michael.christl@ec.europa.eu

Tel.:

EU Science Hub

<https://ec.europa.eu/jrc>

JRC124896

© European Union, 2021



The reuse policy of the European Commission is implemented by the Commission Decision 2011/833/EU of 12 December 2011 on the reuse of Commission documents (OJ L 330, 14.12.2011, p. 39). Except otherwise noted, the reuse of this document is authorised under the Creative Commons Attribution 4.0 International (CC BY 4.0) licence (<https://creativecommons.org/licenses/by/4.0/>). This means that reuse is allowed provided appropriate credit is given and any changes are indicated. For any use or reproduction of photos or other material that is not owned by the EU, permission must be sought directly from the copyright holders.

All content © European Union, 2021

How to cite this report: Böheim, R. and Christl, M., Mismatch unemployment in Austria: The role of regional labour markets for skills, JRC Working Papers on Labour, Education and Technology 2021/08, Seville: European Commission, 2021, JRC124896.

Mismatch unemployment in Austria

The role of regional labour markets for skills

René Böheim (Johannes Kepler University Linz) and Michael Christl (European Commission, Joint Research Centre)

Abstract

During the last decade, the Austrian labour market experienced a substantial outward shift of the Beveridge curve - the relationship between the unemployment and the job vacancy rate. Using detailed administrative data on vacancies and registered unemployed by region and skill level, we test which factors caused this shift. We find that the Beveridge curve shifted primarily because mismatch increased substantially. Looking on the regional and skill dimension of mismatch unemployment, we find a substantial increase of mismatch unemployment for manual routine tasks as well as for the region of Vienna.

Keywords: Beveridge curve, unemployment, matching efficiency

Authors: René Böheim (Johannes Kepler University Linz; IZA Bonn; CESifo Munich; WIFO Austria, Vienna; and GLO.) and Michael Christl (European Commission, Joint Research Centre)

Acknowledgments: We are thankful for helpful comments of Alexander Ahammer and Sergio Torrejon Perez. Additionally, we are indebted to Veronika Murauer (AMS Austria) for her patient support with the preparation of the data.

Joint Research Centre reference number: JRC124896

Contents

- 1 Introduction..... 1
- 2 Theoretical Background..... 2
- 3 Data and Calibration..... 3
- 4 Results..... 7
 - 4.1 Results based on aggregated data for Austria..... 7
 - 4.2 Results by federal state..... 9
 - 4.3 Results by skill level..... 10
 - 4.4 Results by skill level and federal state..... 11
- 5 Conclusion..... 12
- References 14
- List of figures..... 16
- List of tables..... 17
- Annex..... 17

1 Introduction

The Austrian unemployment rate increased from about 4 percent at the beginning of 2000 to 5.6 percent in 2005 and, after the Great Recession, it increased to about 6 percent by 2015. The increasing unemployment rate and a substantial increase in the vacancy rate led to a marked outward shift of the Beveridge curve. Schiman (2018) argues in a macro-model framework that the Austrian Beveridge curve shifted due to a labour supply shock caused by the opening of the labour market to several Eastern European countries after 2008. However, Christl et al. (2016) and later Christl (2020) using detailed data labour-market transition argue that the shift was caused primarily by an increase in labour market mismatch.

Following Veracierto (2011) and Şahin et al. (2014), we test whether or not the outward shift of the Beveridge curve in Austria was caused by mismatch unemployment. Mismatch unemployment is defined as the unemployment that can be attributed to changes in the matching efficiency observed on the labour market. We first analyze aggregate data on the national level. We use unemployment data from the Austrian unemployment office (AMS) by skill level and labour market district level. We combine these data with information from the Austrian Mikrozensus, which includes detailed information on employment by skill levels and by regions. We subsequently provide analyses at different levels of disaggregation, by regions and skill levels, to provide more detailed evidence for the shift of the Beveridge curve.

As shown by Autor et al. (2006), Goos and Manning (2007), Goos et al. (2010), and Autor and Dorn (2013), the employment share of occupations in the middle of the skill distribution declined rapidly in the US and Europe while at the same time the upper and lower skill occupation share has increased substantially, however, this general phenomena can differ across countries due to different institutional settings, socio-demographic dynamics or migrations (see, e.g., Oesch and Rodríguez Menés (2011)). The literature on automation stresses that these jobs often consist of routine tasks that are relatively easy to automatize and which thus are disappearing due to reduced demand (Autor et al., 2003; Michaels et al., 2014). However, the literature on the impact of overall employment effects of automation suggests a rather small impact. Acemoglu et al. (2021), for example, show for the US that while artificial intelligence replaces human workers at different types of tasks, there is currently no aggregate effect on the labour market. When looking on the impact of robots on overall employment, the literature also suggests changes in the task content of jobs rather than a strong reduction of employment¹.

These changes in labour demand lead to substantial challenges in most developed countries. While the demand for certain skills may change quickly, supply side reactions are typically slow as the adjustment of workers requires more time for re-skilling or re-training. Such developments may lead to substantial mismatch and stress the importance of identifying reasons for labour market mismatch and appropriate policy responses.

Our results show that the outward shift of the Austrian Beveridge curve was primarily caused by a substantial increase of mismatch unemployment for manual routine tasks. We find that mismatch unemployment for manual routine tasks increased from about 2 percent to almost 8 percent between 2013 and 2016. This implies that under constant matching of workers and vacancies on the labour market, the mismatch unemployment rate for manual routine tasks, and therefore also the unemployment rate for manual-routine tasks would be 6pp lower. Mismatch unemployment for interactive non-routine tasks also increased, from about 1 to 3 percent. In contrast, we find that mismatch unemployment increased only moderately for other skill groups.

Our analysis also highlights regional differences in the increase of mismatch unemployment. We find that Vienna has the greatest overall increase in mismatch unemployment from about 1 percent in 2013 to more than 3 percent in 2016. Overall, however, the results do not suggest that insufficient regional mobility, due to e.g., house ownership (Farber, 2012), is the reason for increased mismatch.

¹See, e.g., Klenert et al. (2020), Dauth et al. (2017) or Barbieri et al. (2019).

2 Theoretical Background

We use the model of Veracierto (2011) where each firm offers jobs. Jobs remain vacant or become filled by a worker's acceptance of the offer. Workers are either employed, unemployed or inactive. Employed workers separate from their jobs with a probability λ_t^{EU} . For simplicity, our notation does not distinguish between skills and regions, which are additional dimensions we consider below.

The matching between unemployed workers and vacant jobs is modelled with a standard matching function, where the number of new matches M_t is a function of the matching efficiency (A_t), the number of unemployed workers (U_t), and vacant jobs (V_t):

$$M_t = A_t U_t^\alpha V_t^{(1-\alpha)}, \quad (1)$$

where $\alpha, 0 < \alpha < 1$, imposes constant returns to scale (Petrongolo and Pissarides, 2001).

Workers move between three states, unemployment (U), employment (E), and inactivity (I). Hazard rates, λ_t^{IJ} , describe the transitions from labour market status I to labour market status J at time t . In other words, λ_t is the share of workers who move from I to J at time t , N_t^{IJ} , over the number of workers who were in I at time $t-1$, N_{t-1}^I . E.g., $\lambda^{IJ} = N_t^{IJ} / N_{t-1}^I$.

The movement of workers across labour market states is described by the following set of equations:

$$U_{t+1} = U_t + \lambda_t^{EU} * E_t + \lambda_t^{IU} * I_t - \lambda_t^{UI} * U_t - A_t U_t^\alpha V_t^{(1-\alpha)}, \quad (2)$$

$$E_{t+1} = E_t + A_t U_t^\alpha V_t^{(1-\alpha)} + \lambda_t^{IE} * I_t - (\lambda_t^{EU} + \lambda_t^{EI}) * E_t, \quad (3)$$

$$I_{t+1} = I_t + \lambda_t^{EI} * E_t + \lambda_t^{UI} * U_t - \lambda_t^{UI} * U_t - (\lambda_t^{IE} + \lambda_t^{IU}) * I_t. \quad (4)$$

The steady state unemployment is given by:

$$u_t^{ss} = \frac{s_t}{s_t + f_t}, \quad (5)$$

where the separation rate is $s_t = \lambda_t^{EU} + (\lambda_t^{EI} * \lambda_t^{IU}) / (1 - \lambda_t^{II})$ and the job finding rate is $f_t = \lambda_t^{UE} + (\lambda_t^{UI} * \lambda_t^{IE}) / (1 - \lambda_t^{II})$.

We then define mismatch unemployment u_t^{mm} as the difference between the steady state unemployment rate, u_t^{ss} , and the counterfactual unemployment rate, u_t^* , that would have been the outcome of stable matching function:

$$u_t^{mm} = u_t^{ss} - u_t^* = \frac{s_t}{s_t + \lambda_t^{UE} + \lambda_t^{UIE}} - \frac{s_t}{s_t + \lambda_t^{*UE} + \lambda_t^{UIE}}. \quad (6)$$

where $\lambda_t^{UIE} = \frac{\lambda_t^{UI} * \lambda_t^{IE}}{1 - \lambda_t^{II}}$.

In order to calibrate the model, we calculate the parameter α of the matching function. We follow Barlevy (2011) and Veracierto (2011) and assume constant transition rates in the period before the Beveridge curve shift².

We assume a constant matching productivity A over the observed period before the shift. Choosing the month with the strongest and the month with the weakest labour market tightness, separately by region and skill level, allows us to calculate the α parameter (Veracierto, 2011). We set A to the average labour market tightness of the month with the strongest and the month with the weakest labour market tightness, separately for each combination of region and skill level. Following this approach, we calculate the α and use these estimates to calculate the matching efficiency parameter A_t^3 .

We obtain hypothetical vacancy rates for the period after 2014, when we observe the shift in the Beveridge curve, by setting A_t for this period to the average level of the period before 2014, conditional on the observed unemployment rate (Veracierto, 2011).

²As shown in Figure 3, this assumption seems to be reasonable also for the data we are using.

³For a general discussion on estimating matching efficiencies, see e.g., Crawley et al. (2021).

We calculate these parameters for all degrees of disaggregation (region, skill level, and their interaction). Following Barnichon and Figura (2010), we identify the source of Beveridge curve shifts. Shifts can be caused by several factors: supply-side factors, demand-side factors or a change in the efficiency of matches on the labour market. The shift of the Austrian Beveridge curve at the national level and the associated increase in unemployment after 2014 stems mainly from a change in matching efficiency, while other factors play only a minor role (Christl, 2020). We focus in particular on the changes at disaggregated levels to obtain more detailed information about the roots of the increasing labour market mismatch.

3 Data and Calibration

We use data from the Austrian public employment services (PES) from 2004 to 2016, which provide detailed information on the skill levels of the unemployed and the required tasks of posted vacancies (AMS Österreich, 2020). Following Spitz-Oener (2006), we group 119 specific occupations (ISCO-08) into five categories, manual routine tasks, manual non-routine tasks, analytical non-routine tasks, interactive non-routine tasks, and cognitive routine tasks. The detailed list of how occupations are classified is given in Table 6.

The data are quarterly data from 2004:Q1 until 2016:Q4 for five skill categories, aggregated to the nine federal states. We use the Austrian Labour Force Survey (LFS, 'Arbeitskräfteerhebung') to estimate the job finding rate and employment levels by federal state and skill level⁴. The LFS uses the same occupational classification (ISCO-08, at three-digit level) as the Austrian PES. Before 2011, the ISCO-88 classification was used and we convert both classifications to five skill categories⁵, following Bock-Schappelwein et al. (2017). The Austrian LFS has a rotating panel structure which allows us to follow workers for five consecutive quarters. This allows us to estimate job finding rates by skill category and by region.

Table 1 shows the distribution of unemployment and employment across federal states in Austria. About 19.2 percent of employed persons and 31.9 (36.0) percent of unemployed persons were in Vienna. In the table, we report the region's share of unemployed persons based on both the number of registered unemployed observed by the PES and the number of the unemployed observed in the LFS which uses the ILO's definition of unemployment. In general, the unemployment shares are fairly similar in both sources, although the unemployment rates typically differ substantially due to the different definition of unemployment.

⁴See, e.g., Statistik Austria (2020) and Moser (2010).

⁵Table 6 in the Appendix shows the exact categories used for each skill group.

Table 1: Employment and unemployment shares, by federal state.

	Employment (%)	Unemployment (% PES)	unemployment (% ILO)
Burgenland	3.3	3.2	3.0
Carinthia	6.3	7.7	6.0
Lower Austria	19.2	17.1	16.9
Salzburg	6.6	4.6	4.2
Styria	14.3	13.6	12.1
Tyrol	8.9	7.2	5.3
Upper Austria	17.6	11.4	12.8
Vienna	19.2	31.9	36.0
Vorarlberg	4.6	3.5	3.7
total	100	100	100

Source: Data on registered unemployed (PES) obtained from AMS Österreich (2020); data on employment and ILO unemployment from Statistik Austria (2020).

Notes: Percentages are calculated on pooled data 2004:Q1 to 2016:Q4.

Table 2 lists the employment and unemployment shares by skill category, pooled over the sample period. Before 2011, the LFS did not survey skill categories and we cannot compare the unemployment rates of the LFS and the PES data. Of all jobs, about 30 percent were manual non-routine tasks, about 22 percent were interactive non-routine jobs, and about 19 percent were cognitive routine tasks. About 15 percent of jobs were analytical non-routine tasks and about 13 percent of jobs were manual routine tasks.

Table 2: Employment and unemployment, by skill category.

	Employment (%)	Unemployment (%)
Analytical non-routine tasks	15.4	7.3
Interactive non-routine tasks	21.6	13.4
Cognitive routine tasks	19.2	14.6
Manual routine tasks	13.3	31.7
Manual non-routine tasks	30.5	30.7

Source: Data on registered unemployed (PES) obtained from AMS Österreich (2020); data on employment obtained from Statistik Austria (2020).

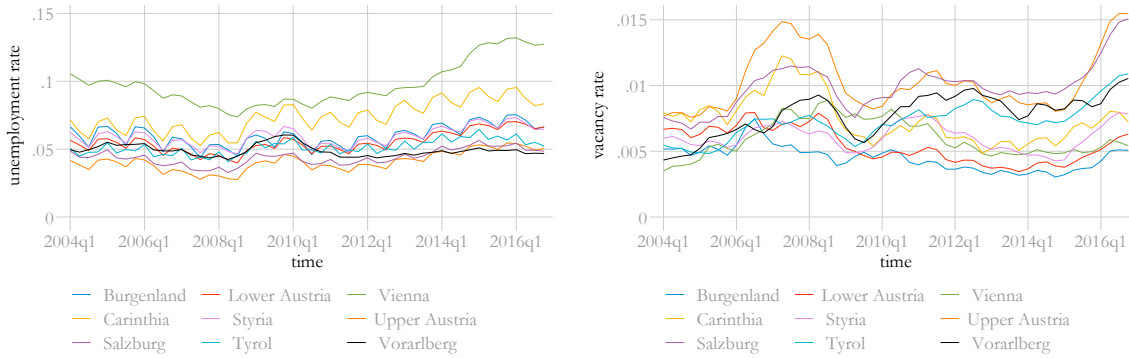
Notes: Shares are calculated as a fraction of total values for Austria. Percentages are calculated on pooled data 2004:Q1 to 2016:Q4. ISCO-08 occupations are grouped as manual routine tasks, manual non-routine tasks, analytical non-routine tasks, interactive non-routine task, and cognitive routine tasks. See Table 6 for details.

The variation of unemployment shares over skill category during our observation period was greater than for employment shares. For example, about 15 percent of jobs were analytical non-routine tasks and about 7 percent of the unemployed had such a job prior to becoming unemployed. Of all jobs, about 13 percent were manual routine tasks, however, about 32 percent of the unemployed had such a job prior to becoming unemployed. The second most common type of employment, interactive non-routine tasks (22 percent of jobs), had about 13 percent of the unemployed.

We plot the quarterly unemployment rates and vacancy rates by region in Figure 1. While the unemployment rate in Vienna was greater than in other regions throughout the sample period, we observe an increase from the lowest value, about 8 percent, in 2008 to almost 13 percent in 2016. The unemployment rate also increased in other regions, such as Upper Austria, Salzburg, and Tyrol,

but to a lesser extent. The vacancy rate, in contrast, increased in most regions and we see particular strong increases in Upper Austria and Salzburg.

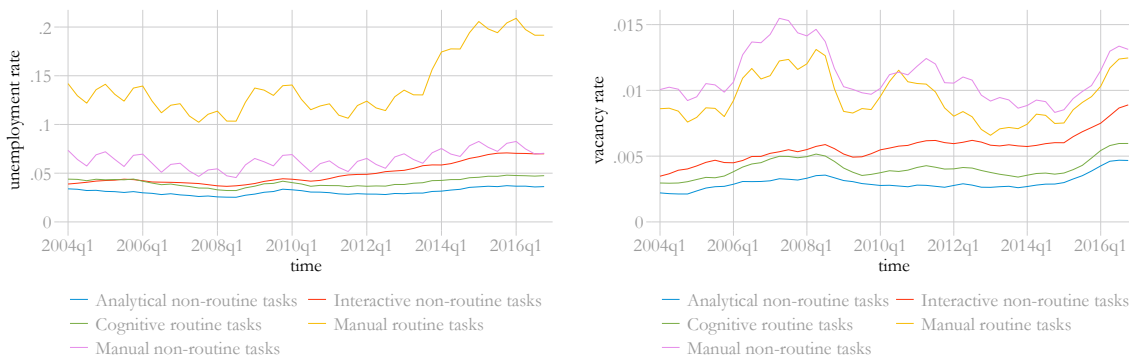
Figure 1: Unemployment rates and vacancy rates, by region.



Source: Vacancies and unemployment obtained from AMS Österreich (2020); data on employment obtained from Statistik Austria (2020).

In Figure 2, we plot the unemployment rates and the vacancy rates by skill category. We observe a substantial increase in the unemployment rate for manual routine tasks, starting in about 2013. We also observe a moderate increase in the unemployment rates of interactive non-routine tasks. The unemployment rates for the other skill categories remained fairly stable during this period. We see, however, an increase of the vacancy rates for all skill categories, in particular for manual routine and manual non-routine tasks.

Figure 2: Unemployment rates and vacancy rates, by skill category.



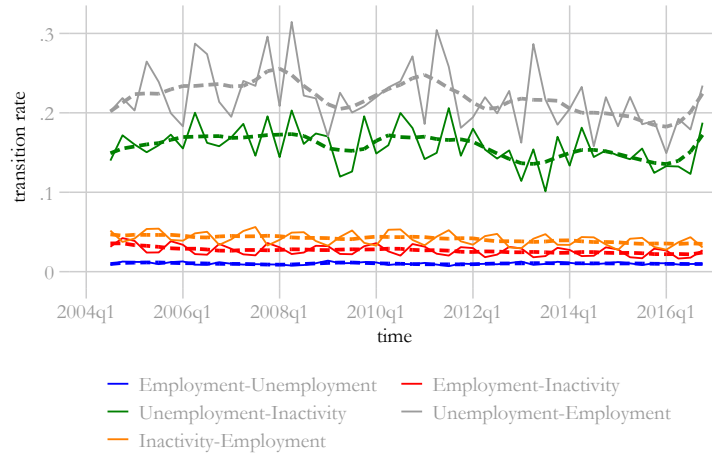
Source: Vacancies and unemployment obtained from AMS Österreich (2020); data on employment obtained from Statistik Austria (2020).
Notes: ISCO-08 occupations are grouped as manual routine tasks, manual non-routine tasks, analytical non-routine tasks, interactive non-routine task, and cognitive routine tasks. See Table 6 for details.

The unemployment rate also differed substantially over regions and skill categories. For example, the unemployment rate in Vienna was about 9.8 percent of the labour force and in Upper Austria it was about 4.1 percent. We also observe differences by skill category, for example, the unemployment rate for analytical non-routine workers was 3.1 percent and it was about 14.1 percent for manual routine workers.

The transition rates between different labour market statuses on aggregate level, which are plotted in Figure 3, changed only slightly over this period. During the 2008/2009 financial crisis, the transition rate from unemployment to employment dropped significantly. Factors related to labour supply shocks that determine the location of the Beveridge curve, such as movements in and out of the labour force,

were also relatively stable. Only the transition rate from unemployment to inactivity dropped slightly after 2012.

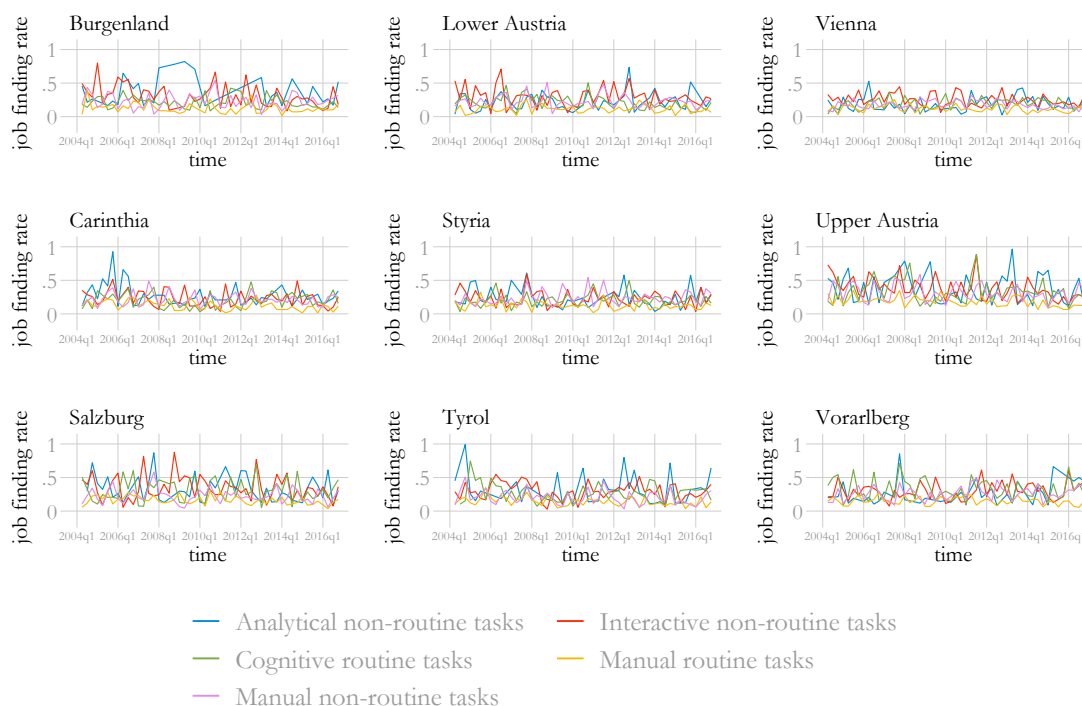
Figure 3: Transition rates, aggregated data for Austria, 2004--2016.



Source: Own calculations, based on quarterly data from 2004 to 2016 from (Statistik Austria, 2020).

Matching efficiency, the productivity of the process for matching job-seekers to available jobs, determines the job-finding rate. We provide a detailed view on the job finding rate and plot these by skill category and region in Figure 4.

Figure 4: Job finding rates, by region and skill category.



Source: Own calculations, based on quarterly data from 2004 to 2016 from (Statistik Austria, 2020).

Notes: ISCO-08 occupations are grouped as manual routine tasks, manual non-routine tasks, analytical non-routine tasks, interactive non-routine task, and cognitive routine tasks. See Table 6 for details.

These plots highlight regional, but also skill-specific differences. The average job finding rate was lowest for manual routine work (13.1 percent) and it was greatest for interactive non-routine workers (27.9 percent). Regional differences were also substantial, for example, the job-finding rate was on average 28.0 percent in Upper Austria and only 18.3 percent in Vienna. Detailed summary statistics by region and skill categories are presented in the Appendix, Tables 4 and 5.

4 Results

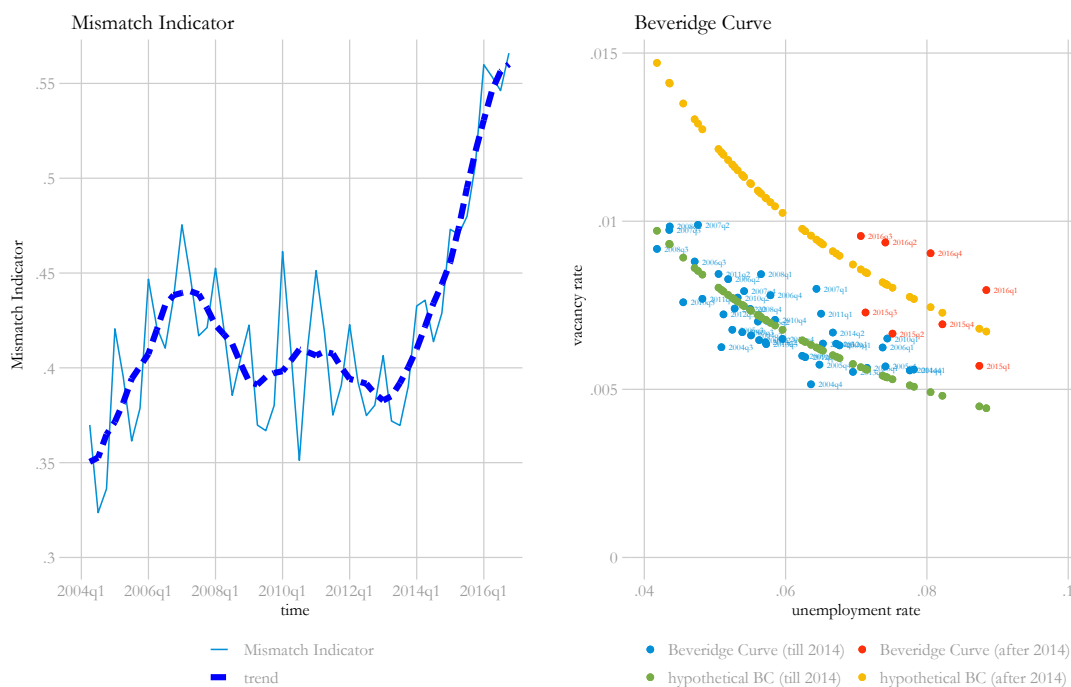
We present first the results for aggregate data. In a second step, we analyse the Beveridge curves on a disaggregated levels: on skill level, as well as on federal state level. In the third part, we use the full disaggregation to distinguish at the same time the regional and skill dimension to use our detailed data set in all dimensions.

4.1 Results based on aggregated data for Austria

In Figure 5, we plot the estimated mismatch indicator⁶ (left) and the resulting Beveridge curves (right) based on aggregated quarterly data from 2004 until 2016.

⁶The mismatch indicator is defined as $1/A$, therefore, an increase in the matching efficiency A would lead to a decrease in the mismatch indicator.

Figure 5: Mismatch Indicator and Beveridge Curves, aggregated data for Austria, 2004--2016.



Source: Own calculation based on data from Statistik Austria (2020) and AMS Österreich (2020).

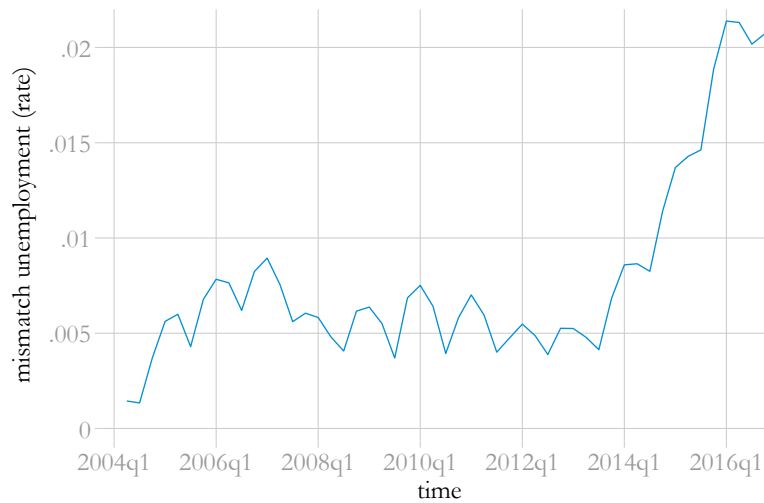
Notes: Trend obtained by local linear smoothing. The hypothetical Beveridge curves are estimated with the average matching efficiency before 2014 and after 2014.

The mismatch indicator suggests a substantial increase in mismatch after 2014. To illustrate the effect of the increased mismatch, we split the sample into two periods, before 2014 and after 2014. We plot the Beveridge curves for the pre-2014 period (blue dots) and the quarters after 2014 (red dots). The predicted Beveridge curve, calibrated with the data from 2004–2014 is plotted in green. The predicted Beveridge curve, calibrated with data from 2014–2016, is plotted in yellow. The distance between the post-2014 labour market outcomes (red dots) and the predicted Beveridge curve (yellow) suggests a deterioration of the matching function.

In a first step, we predict the unemployment rate under the assumption that the matching efficiency was constant at the average level of the period before 2014⁷. We also predict the unemployment rate based on a model where we allow the matching efficiency to change over time, using the observed matching efficiency. We calculate mismatch unemployment as the difference of the two predicted unemployment rates. In Figure 6, we plot the predicted mismatch unemployment rate and we observe a strong increase after 2014. In 2016, the observed unemployment rate was above 7 percent, while the unemployment rate under stable matching would have been close to 5 percent, suggesting a mismatch unemployment of more than 2%-points. The mismatch unemployment in 2016 exceeds all other values in this period.

⁷The predictions are plotted in Figures 11, 14, and 17 in the Appendix.

Figure 6: Mismatch unemployment, aggregated data for Austria, 2004--2016.



Source: Own calculation based on data from Statistik Austria (2020) and AMS Österreich (2020).

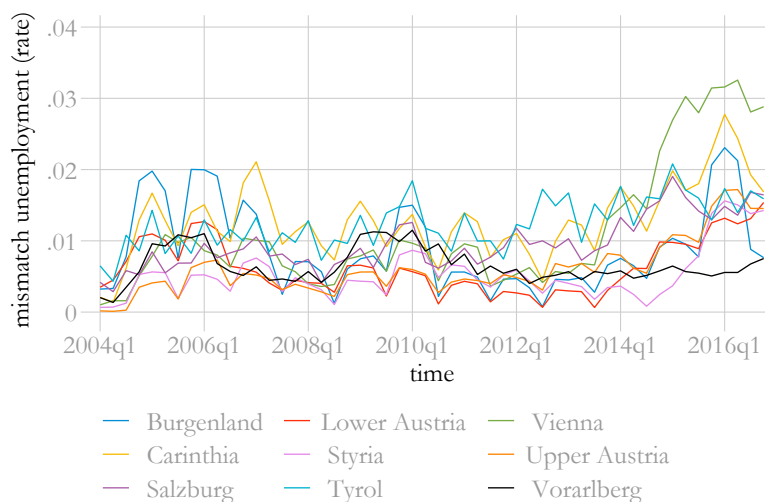
Notes: Mismatch unemployment is the difference between the unemployment rate under a stable matching productivity and the steady-state unemployment rate.

4.2 Results by federal state

Increased mismatch could result from diverging development of the Austrian regions, from supply shocks or changes in the matching productivity. We repeat our analyses and estimate Beveridge curves for all nine federal states. In Figure 12 in the Annex, we plot the resulting mismatch indicators. For most states, we observe an increased mismatch after 2014. In the Burgenland, Carinthia, and in Vorarlberg the mismatch was stable over time while in Tyrol and Salzburg, the mismatch increased over the whole period. Only in Lower Austria, Styria, Upper Austria, and in Vienna do we find a marked increase after 2014. These changes in the mismatch efficiency over time are reflected in the predicted Beveridge curves in Figure 13 in the Annex. We note substantial shifts in the Beveridge curves after 2014, especially in Salzburg, Tyrol, Upper Austria, and Vienna.

This shifts could be potentially driven by labour market mismatch. Therefore, we estimate the regional mismatch unemployment rates and plot them in Figure 7. The comparison of the regional mismatch unemployment rates indicate the particular strong increase in Vienna, where mismatch unemployment rises from about 1 percent to about 3 percent after 2014. We observe increased mismatch unemployment in most other regions, although at lower levels. Only in Vorarlberg and Tyrol, the mismatch unemployment rate remained stable during this period.

Figure 7: Mismatch unemployment, by region.



Source: Own calculation based on data from Statistik Austria (2020) and AMS Österreich (2020).

Notes: Mismatch unemployment is defined as the difference between the unemployment rate under a stable matching productivity and the steady-state unemployment rate.

4.3 Results by skill level

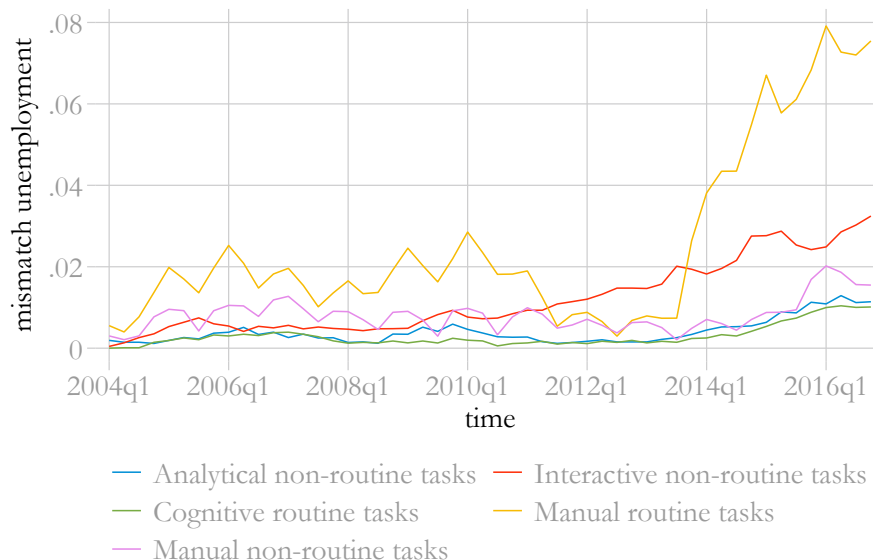
Labour markets differ in their supply of and in their demand for different skills. We see substantial regional differences in the unemployment rates and vacancy rates by skill category. Job finding rates may also differ substantially. Figure 15 highlights the development of the mismatch indicator over time by skill category. We see that the mismatch increased in particular for manual routine tasks and to some extent also for cognitive routine tasks and analytical non-routine tasks after 2014.

These differences correspond to shifts of the estimated Beveridge curves, where the shift is especially pronounced for manual routine tasks. Different skill categories have evolved differently over the recent years. In particular, we observe a substantial increase in the unemployment rate and a stable vacancy rate of manual routine tasks, where unemployment is typically higher than for other skill types.

This suggests increased labour market polarization which is caused by increased skill-mismatch for manual routine tasks. In contrast, we find stable unemployment rates, and a substantial increase of the vacancy rate, for cognitive routine tasks. We interpret this as evidence for a shortage of this specific skill type where few workers are available to fill vacancies.

We plot the resulting mismatch unemployment rates in Figure 8. Although mismatch unemployment for manual routine tasks was greater than for other skill categories before 2011, it increased substantially after 2014, from about 2 percent to almost 8 percent in 2016. While we observe an increase of mismatch unemployment after 2014 also for other skill categories, the increase for manual routine tasks is much more pronounced. It appears that the increase in mismatch unemployment for interactive non-routine tasks started already by 2010, after which it continually increased.

Figure 8: Mismatch unemployment, by skill level.



Source: Own calculation based on data from Statistik Austria (2020) and AMS Österreich (2020).

Notes: Mismatch unemployment is defined as the difference between the unemployment rate under a stable matching productivity and the steady-state unemployment rate.

4.4 Results by skill level and federal state

If we assume that each skill type has a distinct labour market in each region, we may repeat the analysis for the resulting 45 different labour markets. The interpretation of the results requires caution as, at least for neighboring regions or similar skill types, some markets are clearly connected. In addition, some of these labour markets are small, which leads to substantial uncertainty because of the sample size of the Labour Force Survey (LFS).

In Figure 18 we plot the Beveridge curves for analytical non-routine tasks for each of the nine regions. We do not find shifts of these Beveridge curves, with the exception of Upper Austria and Salzburg. We conclude from this evidence that the mismatch for analytical non-routine task is a minor problem in the Austrian labour market.

In contrast, the Beveridge curves for interactive non-routine tasks, plotted in Figure 19, exhibit considerable shifts in all federal states. It is striking that, with the exception of Vienna and Carinthia, the shifts are mainly caused by an increase in the vacancy rates. This suggests increased demand for interactive non-routine tasks, especially in Upper Austria, Salzburg and Vorarlberg.

The Beveridge curves for cognitive routine tasks, Figure 20, reveal shifts only in Styria, Upper Austria, and Salzburg. The shifts appear to be driven more by supply side factors as unemployment rates are relatively more stable than vacancy rates.

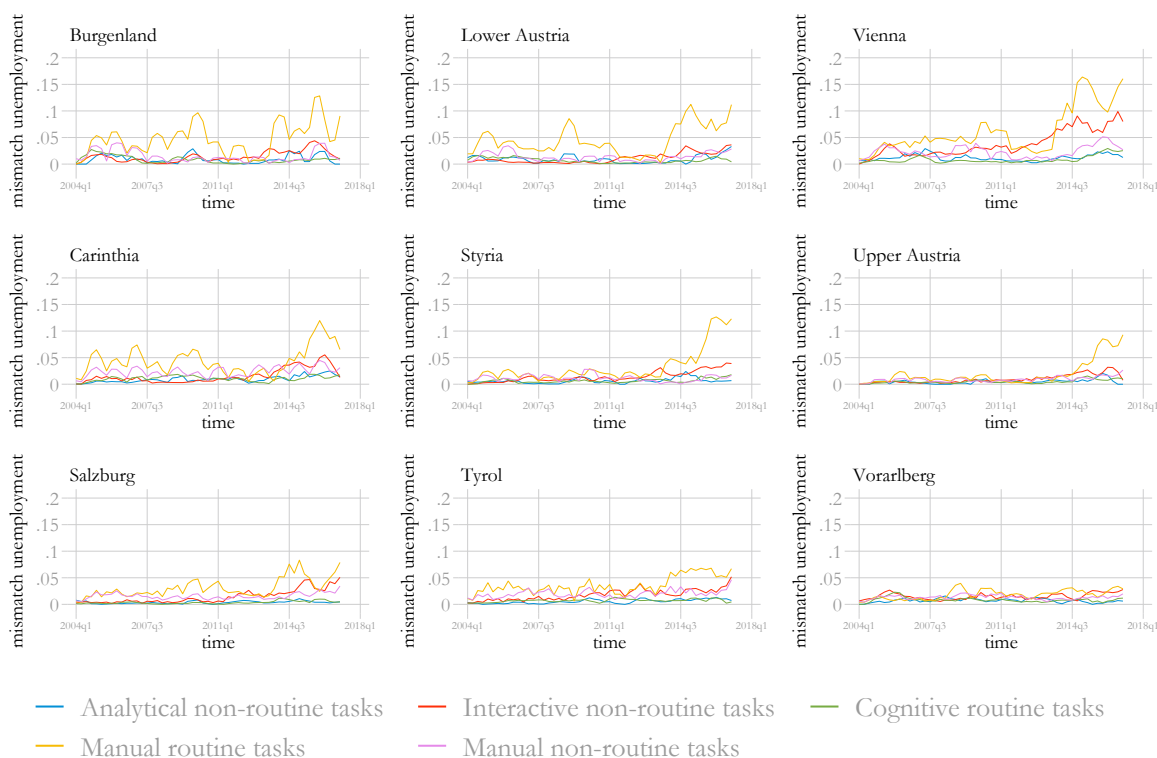
The Beveridge curves for manual routine tasks, Figure 21, shift outwards in almost all regions, with the exception of Upper Austria. These shifts, in contrast to the shifts for cognitive routine tasks, are caused by an increase in the unemployment rates rather than by greater vacancy rates. This suggests that the demand for manual routine tasks has been declining over time, with the implication that it will be difficult for unemployed workers with manual routine skills to find employment.

The Beveridge curves for manual non-routine tasks, plotted in Figure 22, are fairly stable and there are only minor outward shifts in few regions. In contrast to manual routine tasks, we do not find substantial changes in the matching efficiency for manual non-routine tasks.

We plot the estimated mismatch unemployment by region and skill-type in Figure 9. The plots

reveal substantial differences by skill level and region. In particular, mismatch unemployment increased in all regions, with the exception of Vorarlberg. Mismatch unemployment increased most noticeably in Vienna, where we estimate an increase for manual routine tasks and interactive non-routine tasks. While the increase in mismatch unemployment is most pronounced in Vienna, we estimate increased mismatch unemployment for analytical non-routine tasks also in the other regions, however, at more moderate levels.

Figure 9: Mismatch unemployment, by region and skill level.



Source: Own calculation based on data from Statistik Austria (2020) and AMS Österreich (2020).

Notes: Mismatch unemployment is defined as the difference between the unemployment rate under a stable matching productivity and the steady-state unemployment rate.

The general increase in mismatch unemployment for interactive non-routine tasks we have seen before seems to be especially driven by the development in Vienna, where the increase is especially strong with almost 10 percent mismatch unemployment in 2016. For the rest of the skill levels, we do not see a strong increase in mismatch unemployment, even though there are smaller upward movements visible in manual non-routine tasks in Salzburg, Upper Austria, Lower Austria, and Tyrol at the end of our observation period.

5 Conclusion

We analyze the Austrian Beveridge curve shift that happened after 2014. We use detailed vacancy data, on both skill and regional level, from the Public Employment Office (AMS) and estimate labour market flows on disaggregate level using information from the Austrian LFS. Using these data, we disaggregate the labour market into several regional skill labour markets. Following the approach of Veracierto (2011), who uses a simplified version of the Mortensen and Pissarides (1994) model, we

estimate Beveridge curves for Austria and all corresponding disaggregated labour markets. Additionally, we calculate the mismatch unemployment corresponding to each of the disaggregated levels. Our approach does not allow us to identify all potential causes of mismatch separately. However, following Şahin et al. (2014) we argue that analyzing different levels of disaggregation is informative, especially from a policy perspective.

First, we find a substantial increase in mismatch unemployment in Austria after 2014 from about 0.5 percent up to more than 2 percent. Second, we find an increase in most of the Austrian regions after 2014; the increase is especially strong in the region of Vienna, where mismatch unemployment rose from about 1 percent to more than 3 percent. Third, when we consider mismatch unemployment of different skill segments, we find an especially strong increase in mismatch unemployment for manual routine tasks. Mismatch unemployment increase from levels between 1 and 2 percent before 2014 to almost 8 percent after 2014.

While the reasons for the shift of the Beveridge curve have been debated substantially in the literature, our analysis confirms that a decrease in matching efficiency after 2014 led to a shift in the Beveridge curve. While so far the reasons for this shift only have been analyzed partially by Christl (2020), our analysis identifies detailed mismatch unemployment on regional and skill level. This is especially important from a policy point of view, since policies to tackle the mismatch problems on the labour market can be targeted especially on the identified labour markets.

References

- Acemoglu, D., Autor, D., Hazell, J. and Restrepo, P., 'AI and jobs: Evidence from online vacancies', *NBER working paper 28257*, 2021.
- AMS Österreich, 'Arbeitsmarktdaten online'. 2020. Data at <http://iambweb.ams.or.at/ambweb/>.
- Autor, D. H. and Dorn, D., 'The growth of low-skill service jobs and the polarization of the US labor market', *American Economic Review*, Vol. 103, No 5, 2013, pp. 1553–97.
- Autor, D. H., Katz, L. F. and Kearney, M. S., 'The polarization of the US labor market', *American Economic Review*, Vol. 96, No 2, 2006, pp. 189–194.
- Autor, D. H., Levy, F. and Murnane, R. J., 'The skill content of recent technological change: An empirical exploration', *Quarterly Journal of Economics*, Vol. 118, No 4, 2003, pp. 1279–1333.
- Barbieri, L., Mussida, C., Piva, M. and Vivarelli, M., 'Testing the employment impact of automation, robots and ai: A survey and some methodological issues', 2019.
- Barlevy, G., 'Evaluating the role of labor market mismatch in rising unemployment', *Economic Perspectives*, Vol. 35, No 3, 2011, pp. 82–96.
- Barnichon, R. and Figura, A., 'What drives movements in the unemployment rate? A decomposition of the Beveridge curve', *FEDS Finance and Economics Discussion Series 2010-48*, 2010.
- Bock-Schappelwein, J., Famira-Mühlberger, U. and Leoni, T., 'Arbeitsmarktchancen durch Digitalisierung', *WIFO Studies 60909*, 2017.
- Christl, M., 'A Beveridge curve decomposition for Austria: Did the liberalisation of the Austrian labour market shift the Beveridge curve?', *Journal for Labour Market Research*, Vol. 54, No 1, 2020, pp. 1–15.
- Christl, M., Köppl-Turyna, M. and Kucsera, D., 'Structural unemployment after the crisis in Austria', *IZA Journal of European Labor Studies*, Vol. 5, No 1, 2016, p. 12.
- Crawley, A., Welch, S. and Yung, J., 'Improving estimates of job matching efficiency with different measures of unemployment', *Journal of Macroeconomics*, Vol. 67, 2021, p. 103282.
- Dauth, W., Findeisen, S., Südekum, J. and Woessner, N., 'German robots-the impact of industrial robots on workers', 2017.
- Farber, H. S., 'Unemployment in the Great Recession: Did the housing market crisis prevent the unemployed from moving to take jobs?', *American Economic Review*, Vol. 102, No 3, 2012, pp. 520–25.
- Goos, M. and Manning, A., 'Lousy and lovely jobs: The rising polarization of work in Britain', *Review of Economics and Statistics*, Vol. 89, No 1, 2007, pp. 118–133.
- Goos, M., Manning, A. and Salomons, A., 'Explaining job polarization in Europe: The roles of technology, globalization and institutions', *CEP Discussion Papers 1026*, 2010.
- Klenert, D., Fernandez-Macias, E. and Antón Pérez, J. I., 'Do robots really destroy jobs? evidence from europe', Tech. rep., JRC Working Papers Series on Labour, Education and Technology, 2020.
- Michaels, G., Natraj, A. and Van Reenen, J., 'Has ICT polarized skill demand? Evidence from eleven countries over twenty-five years', *Review of Economics and Statistics*, Vol. 96, No 1, 2014, pp. 60–77.

- Mortensen, D. T. and Pissarides, C. A., 'Job creation and job destruction in the theory of unemployment', *Review of Economic Studies*, Vol. 61, No 3, 1994, pp. 397–415.
- Moser, C., 'Daten zur Erwerbstätigkeit in der Mikrozensus-Arbeitskräfteerhebung', *Austrian Journal of Statistics*, Vol. 39, No 1&2, 2010, pp. 117–125.
- Oesch, D. and Rodríguez Menés, J., 'Upgrading or polarization? occupational change in Britain, Germany, Spain and Switzerland, 1990–2008', *Socio-Economic Review*, Vol. 9, No 3, 2011, pp. 503–531.
- Petrongolo, B. and Pissarides, C. A., 'Looking into the black box: A survey of the matching function', *Journal of Economic Literature*, Vol. 39, No 2, 2001, pp. 390–431.
- Schiman, S., 'Labor supply shocks and the Beveridge curve', *WIFO Working Papers 568*, 2018.
- Shimer, R., 'Reassessing the ins and outs of unemployment', *Review of Economic Dynamics*, Vol. 15, No 2, 2012, pp. 127–148.
- Spitz-Oener, A., 'Technical change, job tasks, and rising educational demands: Looking outside the wage structure', *Journal of Labor Economics*, Vol. 24, No 2, 2006, pp. 235–270.
- Statistik Austria, 'Mikrozensus-Arbeitskräfteerhebung'. 2020. Data at https://www.statistik.at/web_de/services/mikrodaten_fuer_forschung_und_lehre/datenangebot/standardisierte_datensaetze_sds/index.html#index3.
- Veracierto, M., 'Worker flows and matching efficiency', *Economic Perspectives*, Vol. 35, No 4, 2011, pp. 147–169.
- Şahin, A., Song, J., Topa, G. and Violante, G. L., 'Mismatch unemployment', *American Economic Review*, Vol. 104, No 11, November 2014, pp. 3529–64.

List of Figures

<i>Figure 1.</i>	Unemployment rates and vacancy rates, by region.	5
<i>Figure 2.</i>	Unemployment rates and vacancy rates, by skill category.	5
<i>Figure 3.</i>	Transition rates, aggregated data for Austria, 2004–2016.	6
<i>Figure 4.</i>	Job finding rates, by region and skill category.	7
<i>Figure 5.</i>	Mismatch Indicator and Beveridge Curves, aggregated data for Austria, 2004–2016.	8
<i>Figure 6.</i>	Mismatch unemployment, aggregated data for Austria, 2004–2016.	9
<i>Figure 7.</i>	Mismatch unemployment, by region.	10
<i>Figure 8.</i>	Mismatch unemployment, by skill level.	11
<i>Figure 9.</i>	Mismatch unemployment, by region and skill level.	12
<i>Figure 10.</i>	Job findings rates, by estimation method.	21
<i>Figure 11.</i>	Model prediction of the unemployment rate, Austria	21
<i>Figure 12.</i>	Mismatch indicators, by region, 2004–2016.	22
<i>Figure 13.</i>	Beveridge curve, by region, 2004–2016.	22
<i>Figure 14.</i>	Model prediction of the unemployment rate, by regions	23
<i>Figure 15.</i>	Mismatch indicator, by skill level, 2004–2016.	23
<i>Figure 16.</i>	Beveridge curves, by skill level, 2004–2016.	24
<i>Figure 17.</i>	Model prediction of the unemployment rate, by skill level	24
<i>Figure 18.</i>	Beveridge curves - analytical non-routine tasks	25
<i>Figure 19.</i>	Beveridge curves - interactive non-routine tasks	25
<i>Figure 20.</i>	Beveridge curves - cognitive routine tasks	26
<i>Figure 21.</i>	Beveridge curves - manual routine tasks	26
<i>Figure 22.</i>	Beveridge curves - manual non-routine tasks	27

List of Tables

<i>Table 1.</i>	Employment and unemployment shares, by federal state.	4
<i>Table 2.</i>	Employment and unemployment, by skill category.	4
<i>Table 3.</i>	Summary statistics by region.	18
<i>Table 4.</i>	Summary statistics by region (cont.)	19
<i>Table 5.</i>	Summary statistics by skill level.	20
<i>Table 6.</i>	Classification of occupations	28

Annex

Table 3: Summary statistics by region.

Variable	Mean	Std. Dev.	Min.	Max.	N
Burgenland					
unemployment rate	0.06	0.016	0.039	0.091	52
vacancy rate	0.004	0.001	0.003	0.008	52
job finding rate	0.203	0.062	0.084	0.37	51
separation rate	0.012	0.025	-0.035	0.055	51
tightness	14.758	6.491	5.279	30.332	52
Lower Austria					
unemployment rate	0.055	0.011	0.036	0.079	52
vacancy rate	0.005	0.002	0.003	0.009	52
job finding rate	0.2	0.056	0.094	0.363	51
separation rate	0.011	0.015	-0.021	0.031	51
tightness	11.188	4.465	3.991	21.775	52
Vienna					
unemployment rate	0.098	0.017	0.071	0.138	52
vacancy rate	0.006	0.002	0.003	0.01	52
job finding rate	0.183	0.043	0.113	0.301	51
separation rate	0.02	0.011	-0.001	0.041	51
tightness	17.891	6.81	7.138	34.947	52
Carinthia					
unemployment rate	0.074	0.019	0.042	0.11	52
vacancy rate	0.007	0.002	0.004	0.014	52
job finding rate	0.187	0.064	0.096	0.388	51
separation rate	0.015	0.027	-0.035	0.064	51
tightness	11.297	5.309	3.267	23.017	52
Styria					
unemployment rate	0.059	0.012	0.041	0.084	52
vacancy rate	0.006	0.001	0.004	0.008	52
job finding rate	0.194	0.054	0.107	0.405	51
separation rate	0.012	0.018	-0.023	0.038	51
tightness	10.344	3.58	5.333	19.761	52
Upper Austria					
unemployment rate	0.041	0.01	0.024	0.061	52
vacancy rate	0.01	0.003	0.007	0.016	52
job finding rate	0.28	0.086	0.1	0.497	51
separation rate	0.011	0.012	-0.015	0.027	51
tightness	4.257	1.657	1.593	8.306	52
Salzburg					
unemployment rate	0.044	0.008	0.027	0.058	52
vacancy rate	0.01	0.002	0.007	0.015	52
job finding rate	0.249	0.069	0.124	0.436	51
separation rate	0.011	0.012	-0.003	0.039	51
tightness	4.647	1.355	2.408	7.872	52

Source: Own calculations, data on registered unemployed and vacancies obtained from AMS Österreich (2020); employment, job-finding rate and separation rate obtained from Statistik Austria (2020).

Table 4: Summary statistics by region (cont.)

Variable	Mean	Std. Dev.	Min.	Max.	N
Tyrol					
unemployment rate	0.051	0.01	0.03	0.069	52
vacancy rate	0.007	0.002	0.005	0.012	52
job finding rate	0.21	0.071	0.089	0.424	51
separation rate	0.012	0.02	-0.015	0.054	51
tightness	7.308	1.894	4.081	11.629	52
Vorarlberg					
unemployment rate	0.049	0.005	0.04	0.063	52
vacancy rate	0.008	0.002	0.004	0.011	52
job finding rate	0.234	0.053	0.101	0.353	51
separation rate	0.012	0.007	0.001	0.033	51
tightness	6.77	2.357	3.917	13.211	52

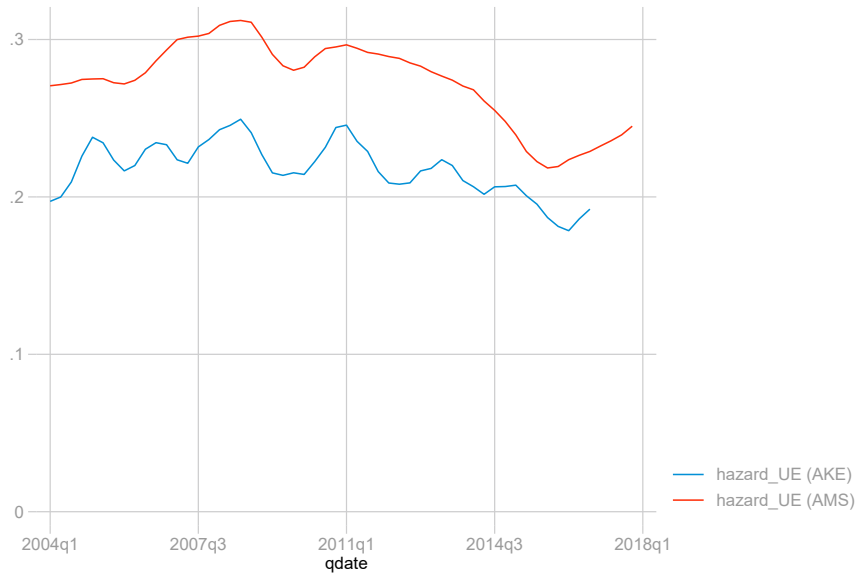
Source: Own calculations, data on registered unemployed and vacancies obtained from AMS Österreich (2020); employment, job-finding rate and separation rate obtained from Statistik Austria (2020).

Table 5: Summary statistics by skill level.

Variable	Mean	Std. Dev.	Min.	Max.	N
analytical non-routine tasks					
unemployment rate	0.031	0.004	0.024	0.038	52
vacancy rate	0.003	0.001	0.002	0.005	52
job finding rate	0.21	0.059	0.1	0.377	51
separation rate	0.007	0.003	-0.003	0.013	51
tightness	10.652	2.28	6.428	17.064	52
interactive non-routine tasks					
unemployment rate	0.049	0.011	0.036	0.071	52
vacancy rate	0.006	0.001	0.003	0.009	52
job finding rate	0.279	0.065	0.174	0.422	51
separation rate	0.015	0.004	0.006	0.023	51
tightness	8.782	1.421	6.063	12.375	52
cognitive routine tasks					
unemployment rate	0.04	0.005	0.03	0.049	52
vacancy rate	0.004	0.001	0.003	0.006	52
job finding rate	0.224	0.05	0.14	0.325	51
separation rate	0.009	0.004	-0.002	0.015	51
tightness	10.223	2.431	5.631	16.765	52
manual routine tasks					
unemployment rate	0.141	0.037	0.088	0.224	52
vacancy rate	0.009	0.002	0.006	0.015	52
job finding rate	0.131	0.034	0.074	0.211	51
separation rate	0.022	0.034	-0.035	0.082	51
tightness	15.952	6.165	6.435	31.442	52
manual non-routine tasks					
unemployment rate	0.064	0.017	0.036	0.097	52
vacancy rate	0.011	0.002	0.008	0.017	52
job finding rate	0.219	0.056	0.127	0.368	51
separation rate	0.014	0.025	-0.033	0.048	51
tightness	6.183	2.507	2.273	12.294	52

Source: Own calculations, data on registered unemployed and vacancies obtained from AMS Österreich (2020); employment, job-finding rate and separation rate obtained from Statistik Austria (2020).

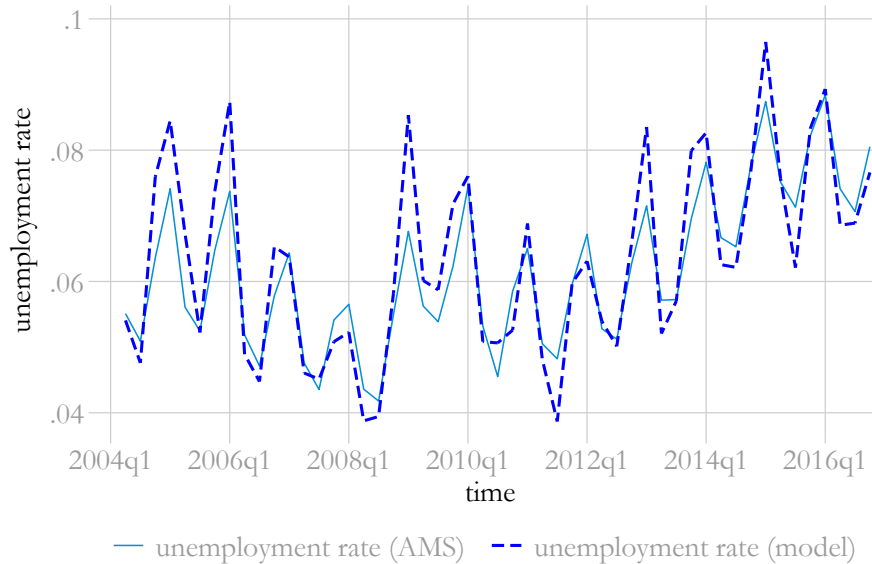
Figure 10: Job findings rates, by estimation method.



Source: Own calculations, based on data from AMS Österreich (2020) and Statistik Austria (2020).

Notes: The graph plots the estimated job findings rates for the whole of Austria. The top line, AMS, is based on the approach by Shimer (2012), which we use here. The bottom line, AKE, is derived from an analysis of labour market flows (Christl, 2020).

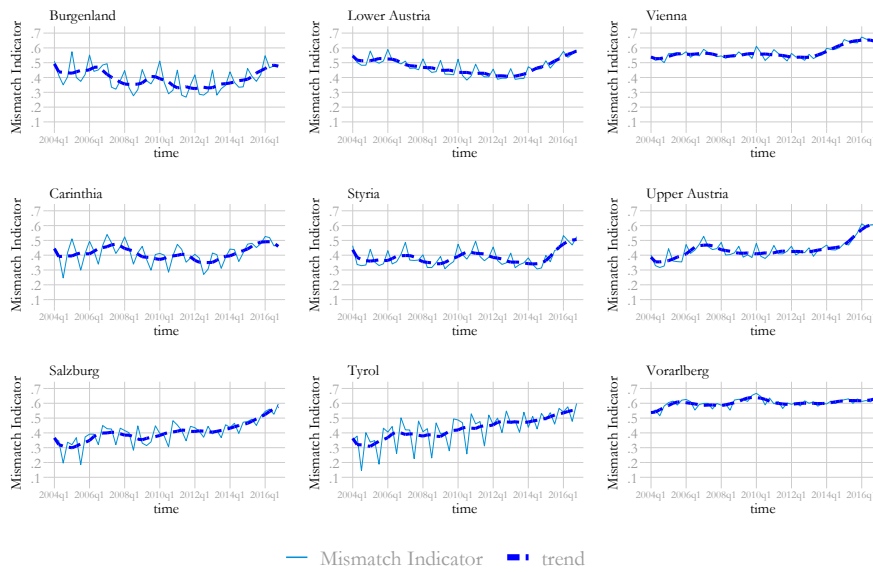
Figure 11: Model prediction of the unemployment rate, Austria



Source: Own calculations, based on data from AMS Österreich (2020) and Statistik Austria (2020).

Notes: The graph plots the estimated unemployment rate for the whole of Austria and compares it with the unemployment rate observed in the data.

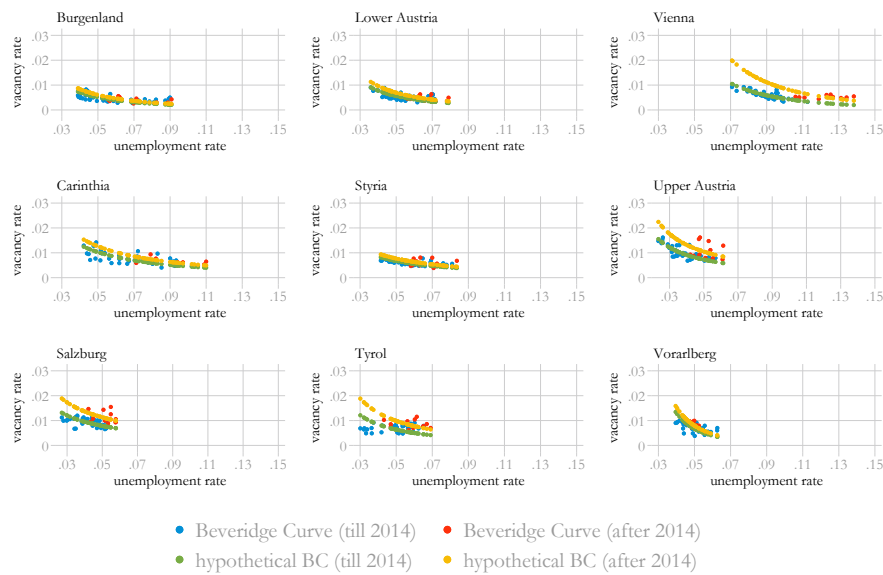
Figure 12: Mismatch indicators, by region, 2004--2016.



Source: Own calculations, based on data from AMS Österreich (2020) and Statistik Austria (2020).

Notes: The trend is derived by a locally weighted smoothing.

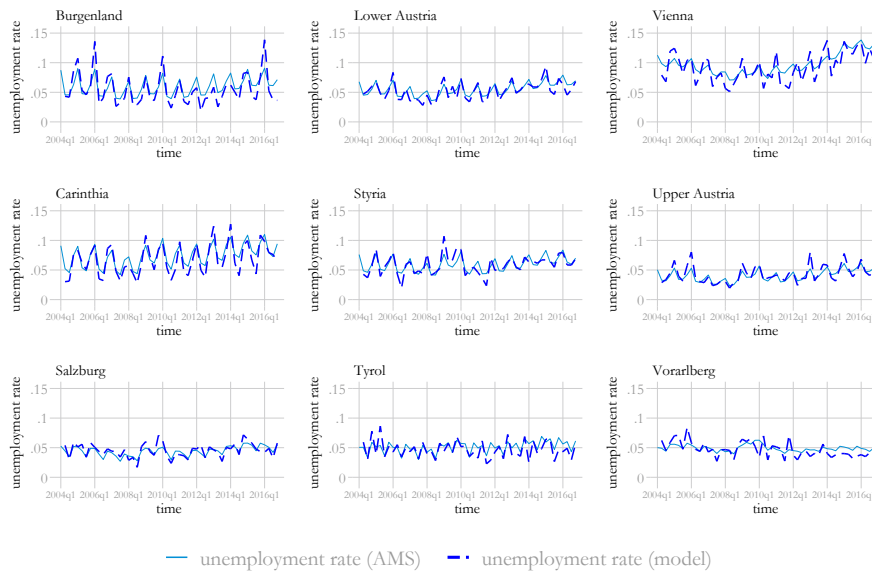
Figure 13: Beveridge curve, by region, 2004--2016.



Source: Own calculations, based on data from AMS Österreich (2020) and Statistik Austria (2020).

Notes: The hypothetical Beveridge curves are estimated with the average matching efficiency before 2014 and after 2014.

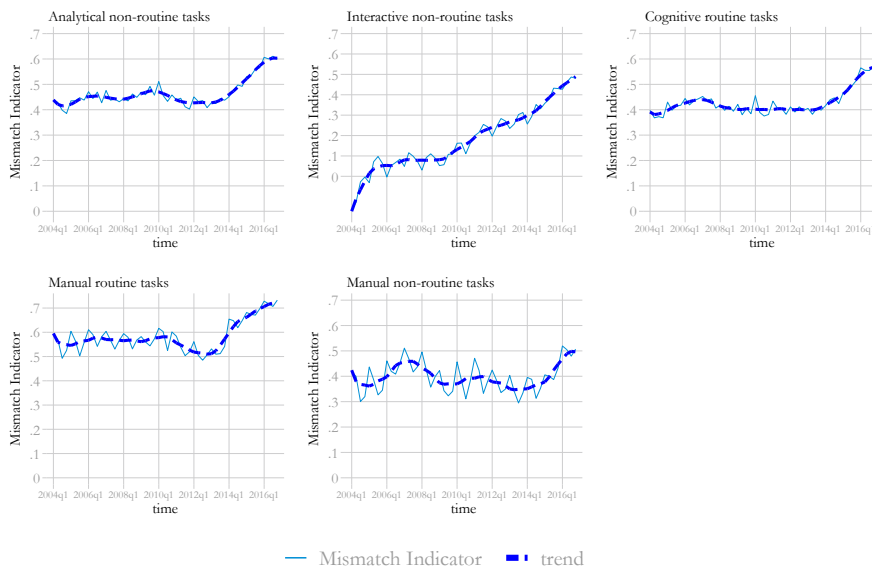
Figure 14: Model prediction of the unemployment rate, by regions



Source: Own calculations, based on data from AMS Österreich (2020) and Statistik Austria (2020).

Notes: The graph plots the estimated unemployment rate for the Austrian regions and compares it with the unemployment rate observed in the data.

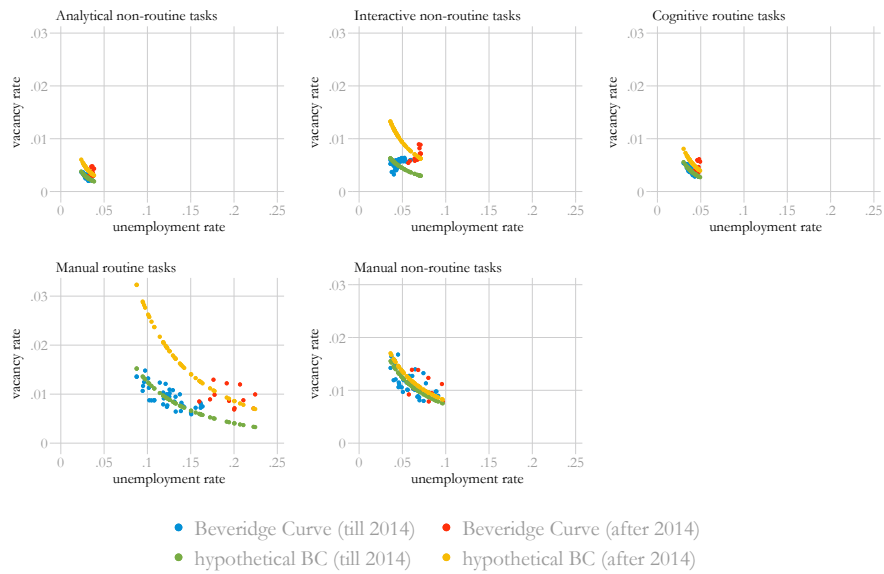
Figure 15: Mismatch indicator, by skill level, 2004--2016.



Source: Own calculations, based on data from AMS Österreich (2020) and Statistik Austria (2020).

Notes: The trend is derived by a locally weighted smoothing.

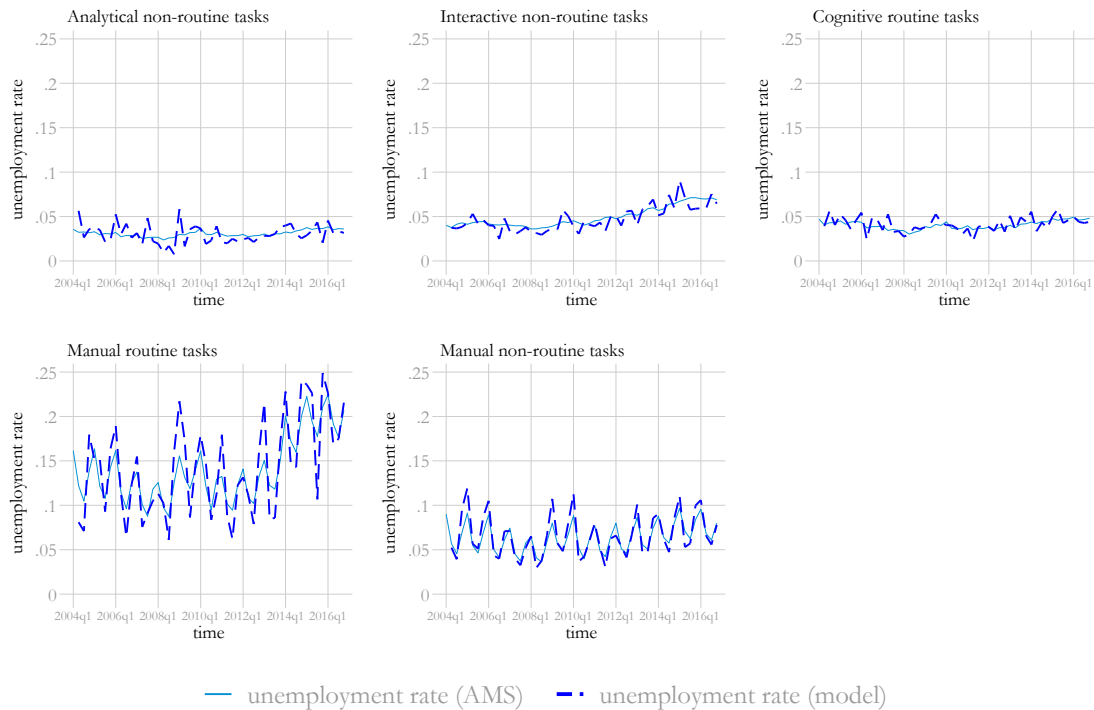
Figure 16: Beveridge curves, by skill level, 2004--2016.



Source: Own calculations, based on data from AMS Österreich (2020) and Statistik Austria (2020).

Notes: The hypothetical Beveridge curves are estimated with the average matching efficiency before 2014 and after 2014.

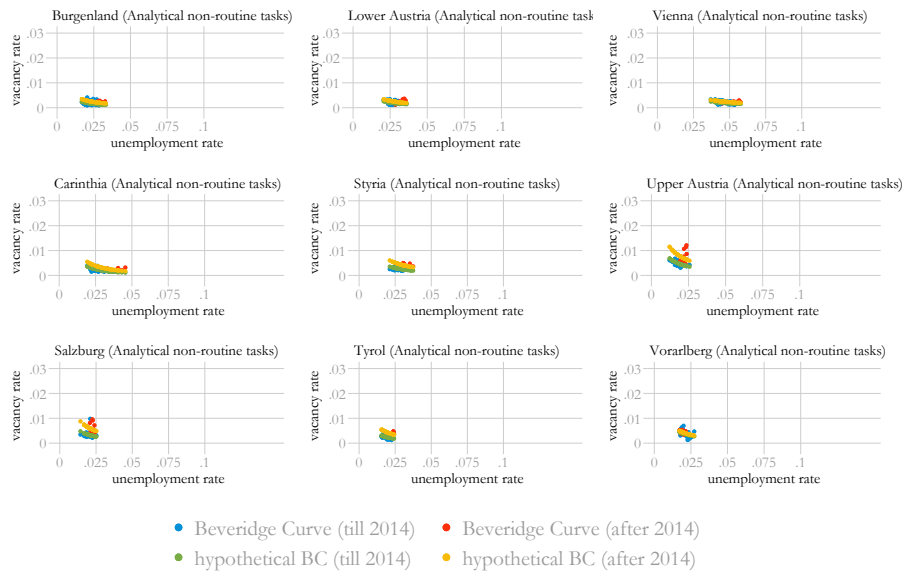
Figure 17: Model prediction of the unemployment rate, by skill level



Source: Own calculations, based on data from AMS Österreich (2020) and Statistik Austria (2020).

Notes: The graph plots the estimated unemployment rate by skill level and compares it with the unemployment rate observed in the data.

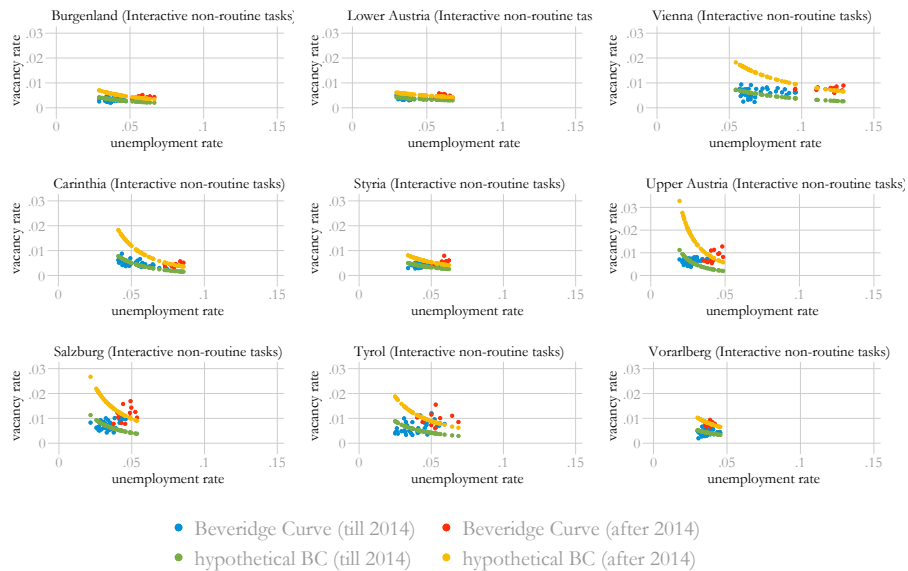
Figure 18: Beveridge curves - analytical non-routine tasks



Source: Own calculations, based on data from AMS Österreich (2020) and Statistik Austria (2020).

Notes: The hypothetical Beveridge curves are estimated with the average matching efficiency before 2014 and after 2014.

Figure 19: Beveridge curves - interactive non-routine tasks



Source: Own calculations, based on data from AMS Österreich (2020) and Statistik Austria (2020).

Notes: The hypothetical Beveridge curves are estimated with the average matching efficiency before 2014 and after 2014.

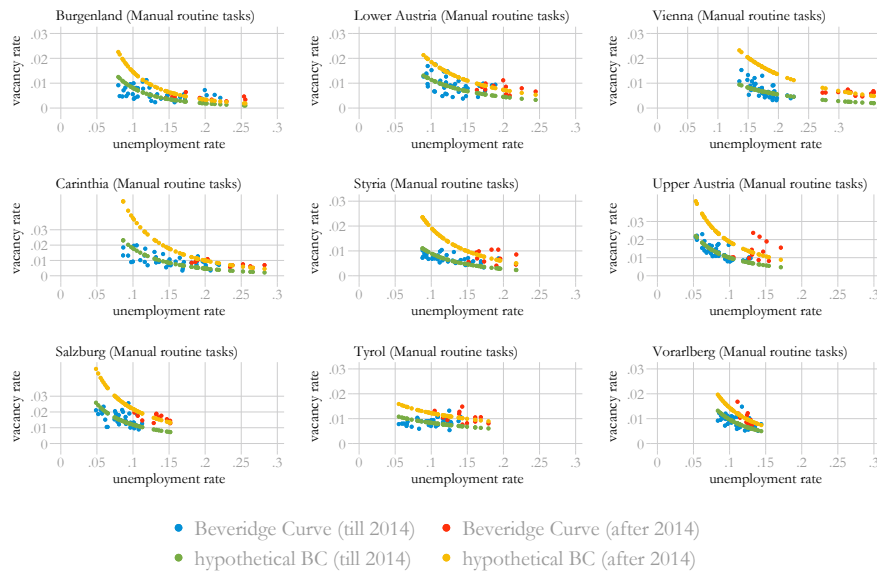
Figure 20: Beveridge curves - cognitive routine tasks



Source: Own calculations, based on data from AMS Österreich (2020) and Statistik Austria (2020).

Notes: The hypothetical Beveridge curves are estimated with the average matching efficiency before 2014 and after 2014.

Figure 21: Beveridge curves - manual routine tasks



Source: Own calculations, based on data from AMS Österreich (2020) and Statistik Austria (2020).

Notes: The hypothetical Beveridge curves are estimated with the average matching efficiency before 2014 and after 2014.

Figure 22: Beveridge curves - manual non-routine tasks



Source: Own calculations, based on data from AMS Österreich (2020) and Statistik Austria (2020).

Notes: The hypothetical Beveridge curves are estimated with the average matching efficiency before 2014 and after 2014.

Table 6: Classification of occupations

<i>ISCO-08</i>	<i>class</i>	<i>task category</i>	<i>description</i>
111	1	manual routine tasks	Legislators and senior officials
112	1	manual routine tasks	Managing directors and chief executives
121	1	manual routine tasks	Business services and administration managers
122	1	manual routine tasks	Sales, marketing and development managers
131	1	manual routine tasks	Production managers in agriculture, forestry and fisheries
132	1	manual routine tasks	Manufacturing, mining, construction, and distribution managers
133	1	manual routine tasks	Information and communications technology service managers
134	1	manual routine tasks	Professional services managers
141	1	manual routine tasks	Hotel and restaurant managers
143	1	manual routine tasks	Other services managers
211	1	manual routine tasks	Physical and earth science professionals
212	1	manual routine tasks	Mathematicians, actuaries and statisticians
213	1	manual routine tasks	Life science professionals
214	1	manual routine tasks	Engineering professionals (excluding electrotechnology)
215	1	manual routine tasks	Electrotechnology engineers
216	1	manual routine tasks	Architects, planners, surveyors and designers
221	1	manual routine tasks	Medical doctors
222	1	manual routine tasks	Nursing and midwifery professionals
225	1	manual routine tasks	Veterinarians
226	1	manual routine tasks	Other health professionals
231	1	manual routine tasks	University and higher education teachers
232	2	interactive non-routine tasks	Vocational education teachers
233	2	interactive non-routine tasks	Secondary education teachers
234	2	interactive non-routine tasks	Primary school and early childhood teachers
235	2	interactive non-routine tasks	Other teaching professionals
241	1	manual routine tasks	Finance professionals
242	1	manual routine tasks	Administration professionals
243	1	manual routine tasks	Sales, marketing and public relations professionals
251	1	manual routine tasks	Software and applications developers and analysts
252	1	manual routine tasks	Database and network professionals
261	1	manual routine tasks	Legal professionals
262	1	manual routine tasks	Librarians, archivists and curators
263	1	manual routine tasks	Social and religious professionals
264	1	manual routine tasks	Authors, journalists and linguists
265	1	manual routine tasks	Creative and performing artists
311	3	cognitive routine tasks	Physical and engineering science technicians
312	1	manual routine tasks	Mining, manufacturing and construction supervisors
313	3	cognitive routine tasks	Process control technicians
314	3	cognitive routine tasks	Life science technicians and related associate professionals
315	5	manual non-routine tasks	Ship and aircraft controllers and technicians
321	3	cognitive routine tasks	Medical and pharmaceutical technicians
322	3	cognitive routine tasks	Nursing and midwifery associate professionals
325	3	cognitive routine tasks	Other health associate professionals
331	3	cognitive routine tasks	Financial and mathematical associate professionals
332	2	interactive non-routine tasks	Sales and purchasing agents and brokers
333	3	cognitive routine tasks	Business services agents

... continued on next page.

Table 6 -- continued from previous page.

<i>ISCO-08</i>	<i>class</i>	<i>task category</i>	<i>description</i>
334	3	<i>cognitive routine tasks</i>	<i>Administrative and specialized secretaries</i>
335	3	<i>cognitive routine tasks</i>	<i>Regulatory government associate professionals</i>
341	2	<i>interactive non-routine tasks</i>	<i>Legal, social and religious associate professionals</i>
342	2	<i>interactive non-routine tasks</i>	<i>Sports and fitness workers</i>
343	2	<i>interactive non-routine tasks</i>	<i>Artistic, cultural and culinary associate professionals</i>
351	3	<i>cognitive routine tasks</i>	<i>Information and communications technology operations and user support technicians</i>
352	3	<i>cognitive routine tasks</i>	<i>Telecommunications and broadcasting technicians</i>
411	3	<i>cognitive routine tasks</i>	<i>General office clerks</i>
412	3	<i>cognitive routine tasks</i>	<i>Secretaries (general)</i>
413	3	<i>cognitive routine tasks</i>	<i>Keyboard operators</i>
421	2	<i>interactive non-routine tasks</i>	<i>Tellers, money collectors and related clerks</i>
422	2	<i>interactive non-routine tasks</i>	<i>Client information workers</i>
431	3	<i>cognitive routine tasks</i>	<i>Numerical clerks</i>
432	3	<i>cognitive routine tasks</i>	<i>Material-recording and transport clerks</i>
441	3	<i>cognitive routine tasks</i>	<i>Other clerical support workers</i>
511	5	<i>manual non-routine tasks</i>	<i>Travel attendants, conductors and guides</i>
512	5	<i>manual non-routine tasks</i>	<i>Cooks</i>
513	5	<i>manual non-routine tasks</i>	<i>Waiters and bartenders</i>
514	5	<i>manual non-routine tasks</i>	<i>Hairdressers, beauticians and related workers</i>
515	5	<i>manual non-routine tasks</i>	<i>Building and housekeeping supervisors</i>
516	5	<i>manual non-routine tasks</i>	<i>Other personal services workers</i>
521	2	<i>interactive non-routine tasks</i>	<i>Street and market salespersons</i>
522	2	<i>interactive non-routine tasks</i>	<i>Shop salespersons</i>
523	2	<i>interactive non-routine tasks</i>	<i>Cashiers and ticket clerks</i>
524	2	<i>interactive non-routine tasks</i>	<i>Other sales workers</i>
531	2	<i>interactive non-routine tasks</i>	<i>Child care workers and teachers' aides</i>
532	5	<i>manual non-routine tasks</i>	<i>Personal care workers in health services</i>
541	5	<i>manual non-routine tasks</i>	<i>Protective services workers</i>
611	5	<i>manual non-routine tasks</i>	<i>Market gardeners and crop growers</i>
612	5	<i>manual non-routine tasks</i>	<i>Animal producers</i>
613	5	<i>manual non-routine tasks</i>	<i>Mixed crop and animal producers</i>
621	5	<i>manual non-routine tasks</i>	<i>Forestry and related workers</i>
622	5	<i>manual non-routine tasks</i>	<i>Fishery workers, hunters and trappers</i>
711	5	<i>manual non-routine tasks</i>	<i>Building frame and related trades workers</i>
712	5	<i>manual non-routine tasks</i>	<i>Building finishers and related trades workers</i>
713	5	<i>manual non-routine tasks</i>	<i>Painters, building structure cleaners and related trades workers</i>
721	5	<i>manual non-routine tasks</i>	<i>Sheet and structural metal workers, molders and welders, and related workers</i>
722	5	<i>manual non-routine tasks</i>	<i>Blacksmiths, toolmakers and related trades workers</i>
723	5	<i>manual non-routine tasks</i>	<i>Machinery mechanics and repairers</i>
731	5	<i>manual non-routine tasks</i>	<i>Handicraft workers</i>
732	5	<i>manual non-routine tasks</i>	<i>Printing trades workers</i>
741	5	<i>manual non-routine tasks</i>	<i>Electrical equipment installers and repairers</i>
742	5	<i>manual non-routine tasks</i>	<i>Electronics and telecommunications installers and repairers</i>
751	5	<i>manual non-routine tasks</i>	<i>Food processing and related trades workers</i>
752	5	<i>manual non-routine tasks</i>	<i>Wood treaters, cabinet-makers and related trades workers</i>

... continued on next page.

Table 6 -- continued from previous page.

<i>ISCO-08</i>	<i>class</i>	<i>task category</i>	<i>description</i>
753	5	<i>manual non-routine tasks</i>	<i>Garment and related trades workers</i>
754	4	<i>analytical non-routine tasks</i>	<i>Other craft and related workers</i>
811	4	<i>analytical non-routine tasks</i>	<i>Mining and mineral processing plant operators</i>
812	4	<i>analytical non-routine tasks</i>	<i>Metal processing and finishing plant operators</i>
813	4	<i>analytical non-routine tasks</i>	<i>Chemical and photographic products plant and machine operators</i>
814	4	<i>analytical non-routine tasks</i>	<i>Rubber, plastic and paper products machine operators</i>
815	4	<i>analytical non-routine tasks</i>	<i>Textile, fur and leather products machine operators</i>
816	4	<i>analytical non-routine tasks</i>	<i>Food and related products machine operators</i>
817	4	<i>analytical non-routine tasks</i>	<i>Wood processing and papermaking plant operators</i>
818	4	<i>analytical non-routine tasks</i>	<i>Other stationary plant and machine operators</i>
821	4	<i>analytical non-routine tasks</i>	<i>Assemblers</i>
831	5	<i>manual non-routine tasks</i>	<i>Locomotive engine drivers and related workers</i>
832	5	<i>manual non-routine tasks</i>	<i>Car, van and motorcycle drivers</i>
833	5	<i>manual non-routine tasks</i>	<i>Heavy truck and bus drivers</i>
834	4	<i>analytical non-routine tasks</i>	<i>Mobile plant operators</i>
835	4	<i>analytical non-routine tasks</i>	<i>Ships' deck crews and related workers</i>
911	4	<i>analytical non-routine tasks</i>	<i>Domestic, hotel and office cleaners and helpers</i>
912	4	<i>analytical non-routine tasks</i>	<i>Vehicle, window, laundry and other hand cleaning workers</i>
921	4	<i>analytical non-routine tasks</i>	<i>Agricultural, forestry and fishery labourers</i>
931	4	<i>analytical non-routine tasks</i>	<i>Mining and construction labourers</i>
932	4	<i>analytical non-routine tasks</i>	<i>Manufacturing labourers</i>
933	4	<i>analytical non-routine tasks</i>	<i>Transport and storage labourers</i>
941	4	<i>analytical non-routine tasks</i>	<i>Food preparation assistants</i>
951	4	<i>analytical non-routine tasks</i>	<i>Street and related service workers</i>
961	4	<i>analytical non-routine tasks</i>	<i>Street vendors (excluding food)</i>
962	4	<i>analytical non-routine tasks</i>	<i>Other elementary workers</i>

GETTING IN TOUCH WITH THE EU

In person

All over the European Union there are hundreds of Europe Direct information centres. You can find the address of the centre nearest you at: https://europa.eu/european-union/contact_en

On the phone or by email

Europe Direct is a service that answers your questions about the European Union. You can contact this service:

- by freephone: 00 800 6 7 8 9 10 11 (certain operators may charge for these calls),
- at the following standard number: +32 22999696, or
- by electronic mail via: https://europa.eu/european-union/contact_en

FINDING INFORMATION ABOUT THE EU

Online

Information about the European Union in all the official languages of the EU is available on the Europa website at: https://europa.eu/european-union/index_en

EU publications

You can download or order free and priced EU publications from EU Bookshop at: <https://publications.europa.eu/en/publications>. Multiple copies of free publications may be obtained by contacting Europe Direct or your local information centre (see https://europa.eu/european-union/contact_en).

The European Commission's science and knowledge service

Joint Research Centre

JRC Mission

As the science and knowledge service of the European Commission, the Joint Research Centre's mission is to support EU policies with independent evidence throughout the whole policy cycle.



EU Science Hub

ec.europa.eu/jrc



@EU_ScienceHub



EU Science Hub - Joint Research Centre



EU Science, Research and Innovation



EU Science Hub